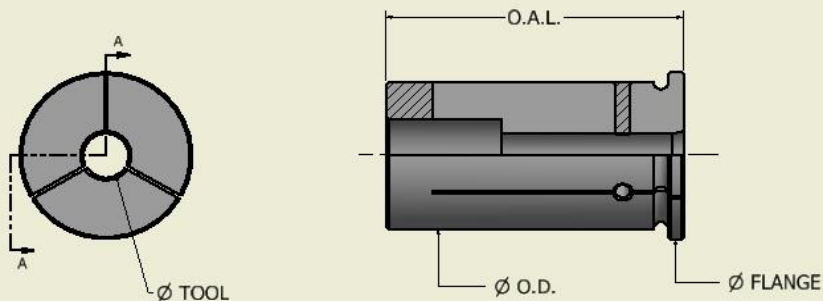


# Hydra-Lock COLLETS



STOCK NO.	TOOL SIZE	TOOL DIA.	O.D.	FLANGE	O.A.L.
		in.	in. / [mm]	in. / [mm]	in. / [mm]
S0787X0187	3/16	0.187	.787 [20.0]	.94 [24]	2.09 [53]
S0787X0125	1/8	0.125	.787 [20.0]	.94 [24]	2.09 [53]
S0787X0250	1/4	0.250	.787 [20.0]	.94 [24]	2.09 [53]
S0787X0375	3/8	0.375	.787 [20.0]	.94 [24]	2.09 [53]
S0787X0500	1/2	0.500	.787 [20.0]	.94 [24]	2.09 [53]
S0787X0625	5/8	0.625	.787 [20.0]	.94 [24]	2.09 [53]
S0500X0125	1/8	0.125	.500 [12.7]	.94 [24]	2.09 [53]
S0500X0187	3/16	0.187	.500 [12.7]	.94 [24]	2.09 [53]
S0500X0250	1/4	0.250	.500 [12.7]	.94 [24]	2.09 [53]
S0500X0312	5/16	0.312	.500 [12.7]	.94 [24]	2.09 [53]
S0500X0375	3/8	0.375	.500 [12.7]	.94 [24]	2.09 [53]
S0750X0125	1/8	0.125	.750 [19.1]	.94 [24]	2.09 [53]
S0750X0187	3/16	0.187	.750 [19.1]	.94 [24]	2.09 [53]
S0750X0236	6 mm	0.236	.750 [19.1]	.94 [24]	2.09 [53]
S0750X0250	1/4	0.250	.750 [19.1]	.94 [24]	2.09 [53]
S0750X0314	8 mm	0.314	.750 [19.1]	.94 [24]	2.09 [53]
S0750X0375	3/8	0.375	.750 [19.1]	.94 [24]	2.09 [53]
S0750X0393	10 mm	0.393	.750 [19.1]	.94 [24]	2.09 [53]
S0750X0500	1/2	0.500	.750 [19.1]	.94 [24]	2.09 [53]
S0750X0562	9/16	0.562	.750 [19.1]	.94 [24]	2.09 [53]
S0750X0625	5/8	0.625	.750 [19.1]	.94 [24]	2.09 [53]
S1250X0250	1/4	0.250	1.250 [31.8]	1.42 [36]	2.44 [62]
S1250X0375	3/8	0.375	1.250 [31.8]	1.42 [36]	2.44 [62]
S1250X0500	1/2	0.500	1.250 [31.8]	1.42 [36]	2.44 [62]
S1250X0625	5/8	0.625	1.250 [31.8]	1.42 [36]	2.44 [62]
S1250X0750	3/4	0.750	1.250 [31.8]	1.42 [36]	2.44 [62]
S1250X1000	1 in	1.000	1.250 [31.8]	1.42 [36]	2.44 [62]
S1260X0875	7/8	0.875	1.260 [32]	1.42 [36]	2.44 [62]
S1260X1000	1 in	1.000	1.260 [32]	1.42 [36]	2.44 [62]

SL=Slotted SE=Sealed

Note: Other sizes not shown are available upon request