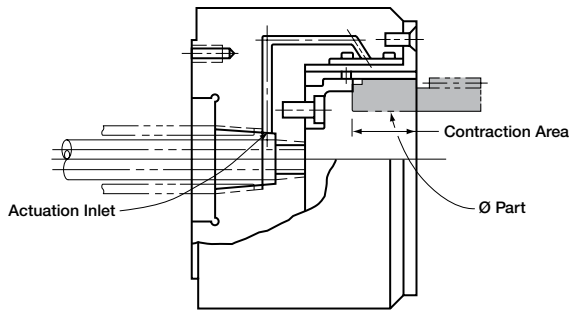


Contracting Precision Hole-Through Chuck

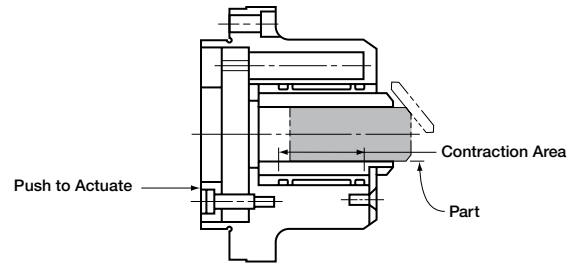


FEATURES:

Class: B
 Actuation: Direct pressure through the spindle.
 Mounting: Spindle-nose mounted
 High Precision
 High Production

Contracting precision chuck with through-the-spindle permits parts to be automatically ejected by a reciprocating coolant tube through the spindle.

Contracting Precision Hole-Through Chuck



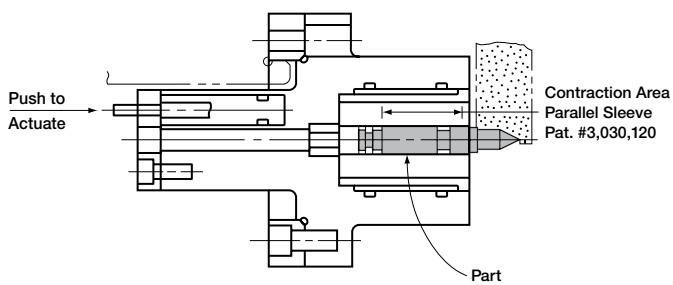
FEATURES:

Classes: Can be A, B, or C.
 Actuation: Push to actuate. Self-contained hydraulic system.

Hollow Spindle – Through feed for high production. Removable wear sleeve to handle different size parts.
 Contraction Range: See classifications A, B, and C described on page 2.

This type chuck with tube actuation permits parts to be automatically fed through the machine spindle and chuck to a retractable stop.

Contracting Hole-Through Chuck

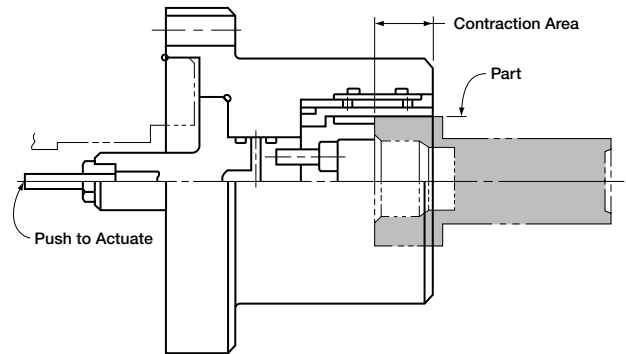


FEATURES:

Class: B
 Actuation: Push to actuate – tube through spindle – self-contained hydraulic system.
 Mounting: Spindle mounted
 Accuracy: Square and concentric with adjustable tune-up screws.
 .000050 T.I.R.

Hole-through chuck with tube actuation permits parts to be automatically positioned and ejected. Several similar parts can be handled by changing parallel sleeves.

Contracting Chuck



FEATURES:

Class: B
 Actuation: Push to actuate. Self-contained hydraulic system.
 Mounting: Flange mounted
 End-contracting replaceable wear sleeve.

This design primarily used for parts with short locating diameters.